

BEC SMITH

CAMEOS



20 NOV - 2 DEC 2018

CAMEOS

After her successful first showing at Saint Cloche as part of the Jet Set group show in 2017, Bec Smith is back with a larger body of work in her forthcoming solo exhibition, Cameos.

“There are fossils of seashells high in the Himalayas;
what was and what is are different things.”
- Rebecca Solnit, A Field Guide to Getting Lost

In her trademark geometric style and alluring palette of colours, Bec explores the transient and ephemeral nature of identity, and the idea that life's long journey is one of transition from one place to another; unwitting, slow and uncontrollable, like a fragile continental drift. These paintings symbolise the dynamics of a changing identity when mixed with parenthood, work, and creativity, in a modern world. A version of oneself, which it is impermanent, as much as we proclaim to know it or capture it. These paintings are 'cameos'.



“When I became pregnant with my son the way I saw myself began to change: the more people asked after my baby rather than my myself or my work the more my identity fragmented.

Once my son was born, aspects of myself, which I thought important formed different dynamics - things that once mattered no longer did while others simply became part of the new. I saw that in nature things are fluid - a shell is a living, growing organism yet it breaks, two halves of a bi-valve fall away, become part of other structures or a home for other beings, while pearls are coveted prizes grown layer upon layer out of adversity.

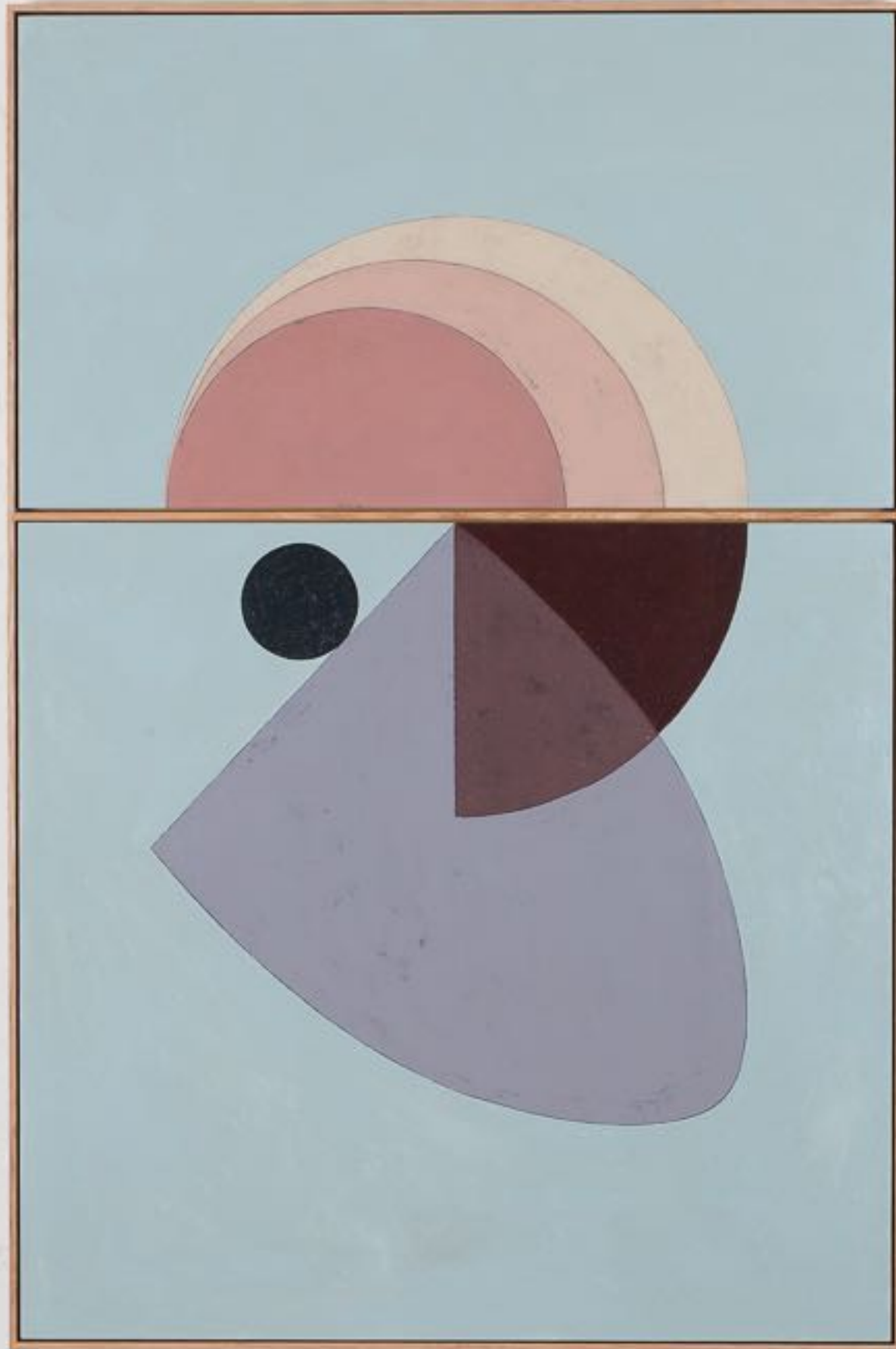
Human transformation is similar in that there are moments we inhabit where things shift slowly and nothing feels altogether changed - until one day we realise things have changed entirely. Something the natural world does all the time.”



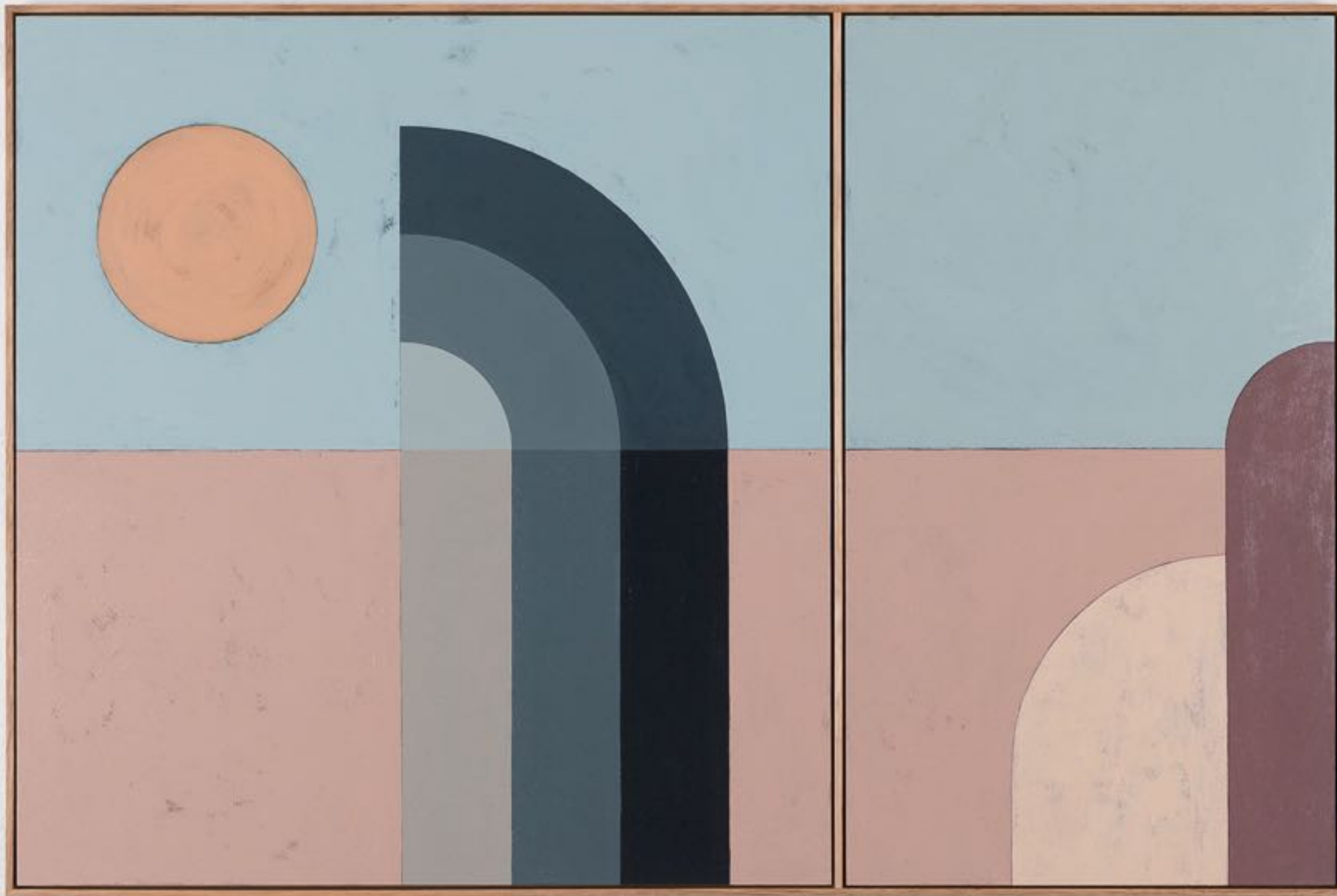


Bec Smith is a Melbourne-based artist who has practiced art and design in both Australia and overseas for over 20 years.

She has always stayed particularly interested in abstract, non-objective, and colourfield paintings from the early part of the last century - a natural extension of a designer's grounding in the early design language of the Bauhaus.



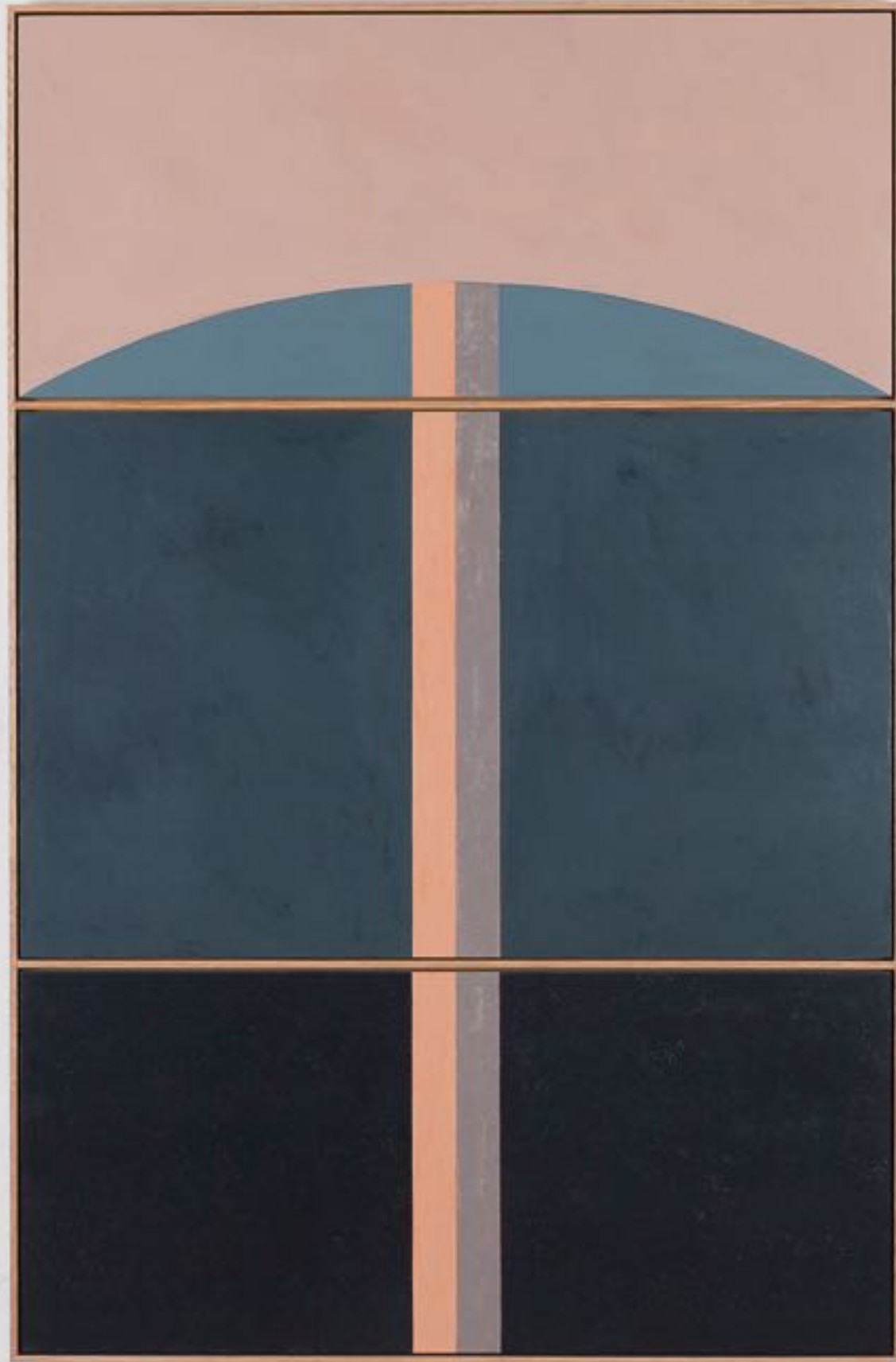
**Translucent Shell With Black Pearl Oyster /
Strength & Vulnerability**
Diptych in acrylic and mixed media on board.
Framed in Tasmanian Oak
Framed size 820x1235mm
\$2,900



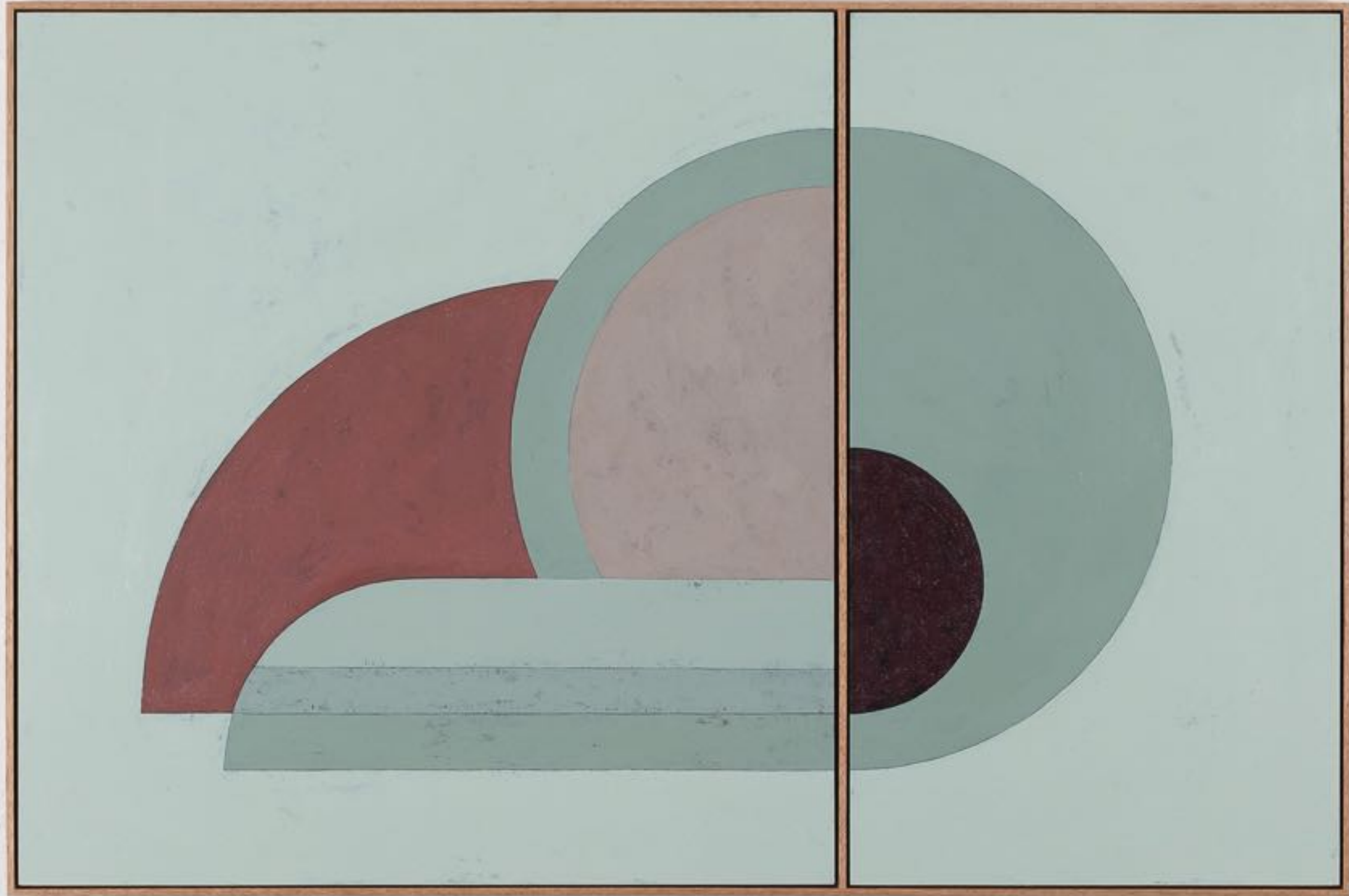
I Can Miss You Without The Need To Meet Again / Surrender
Diptych in acrylic and mixed media on board. Framed in Tasmanian Oak
Framed size 1235x820mm
\$2,900



**Remembering A Time When I Was Never
Not Ready To Leave / Belonging**
Triptych in acrylic and mixed media on board.
Framed in Tasmanian Oak
Framed size 820x1250mm
\$2,900



**Let's Float Toward The Curve Of The
World / Perspective**
Triptych in acrylic and mixed media on board.
Framed in Tasmanian Oak
Framed size 820x1250mm
\$2,900



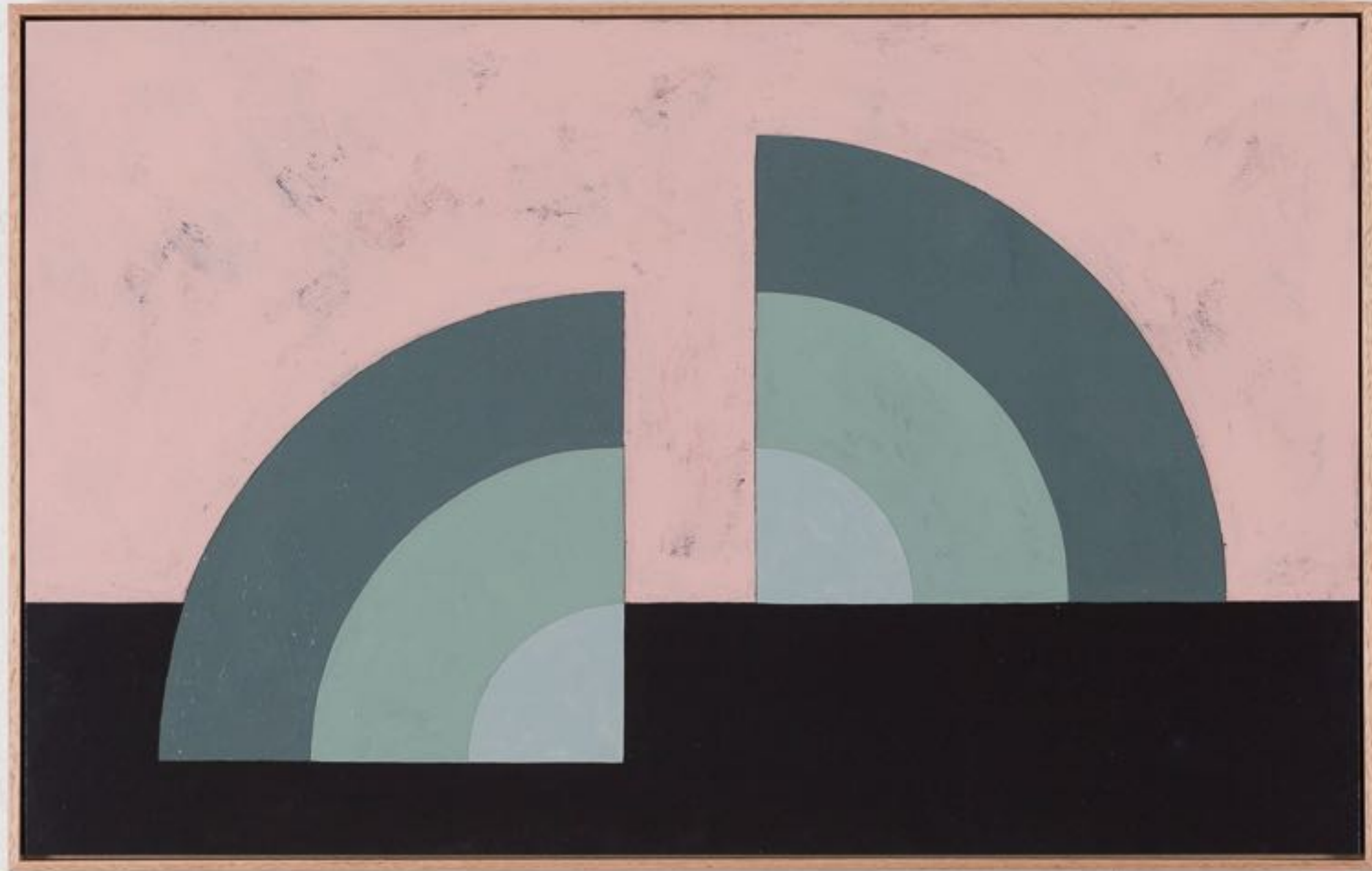
We Are A Haven and A Hideout / Protection
Diptych in acrylic and mixed media on board. Framed in Tasmanian Oak
Framed size 1235x820mm
\$2,900



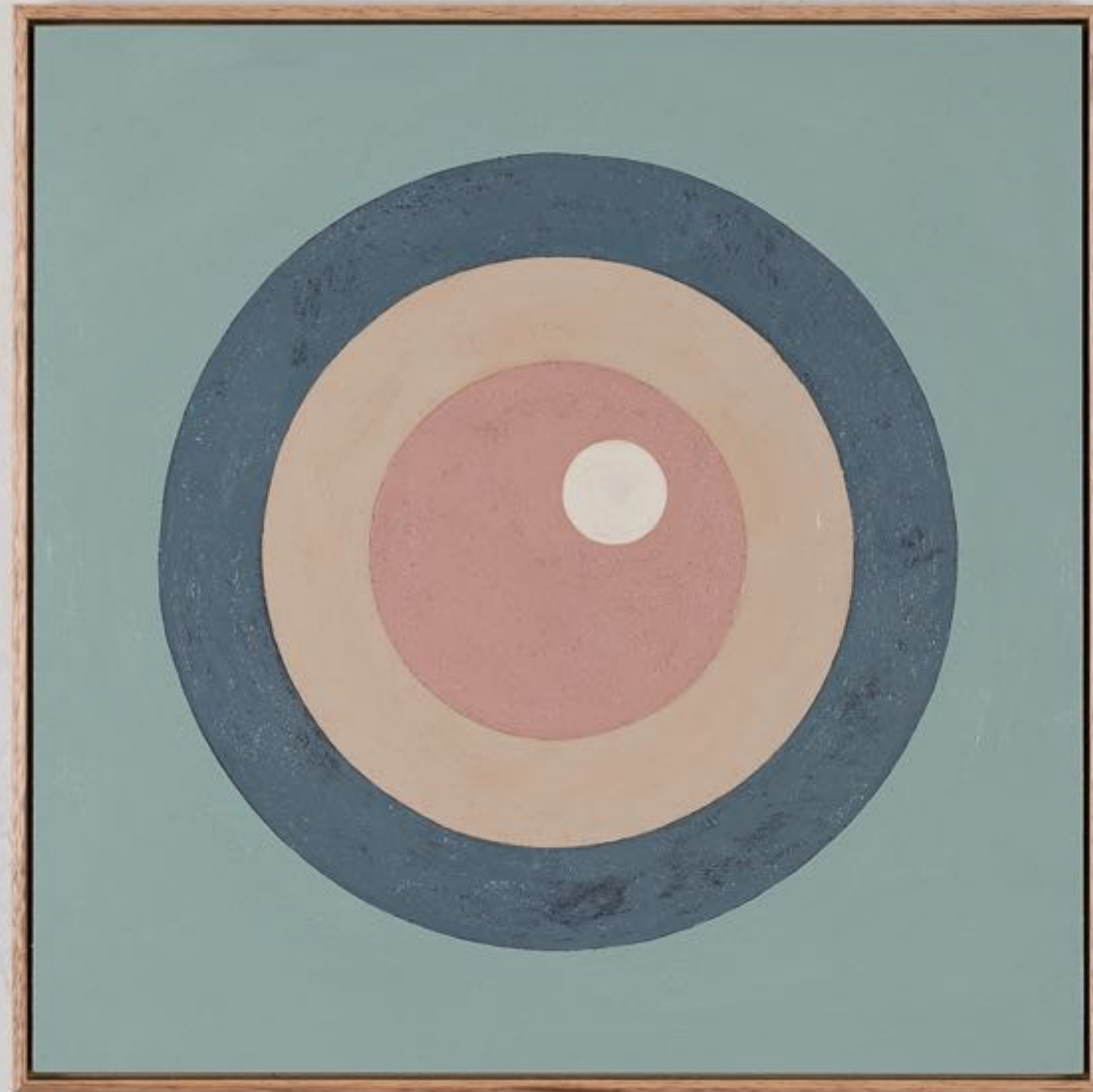
I Am Nothing, I Am Everything / Paradox
Diptych in acrylic and mixed media on board. Framed in Tasmanian Oak
Framed size 1235x820mm
\$2,900



Neither Here Nor There Really / Divided
Diptych in acrylic and mixed media on board. Framed in Tasmanian Oak
Framed size 1235x820mm
\$2,900

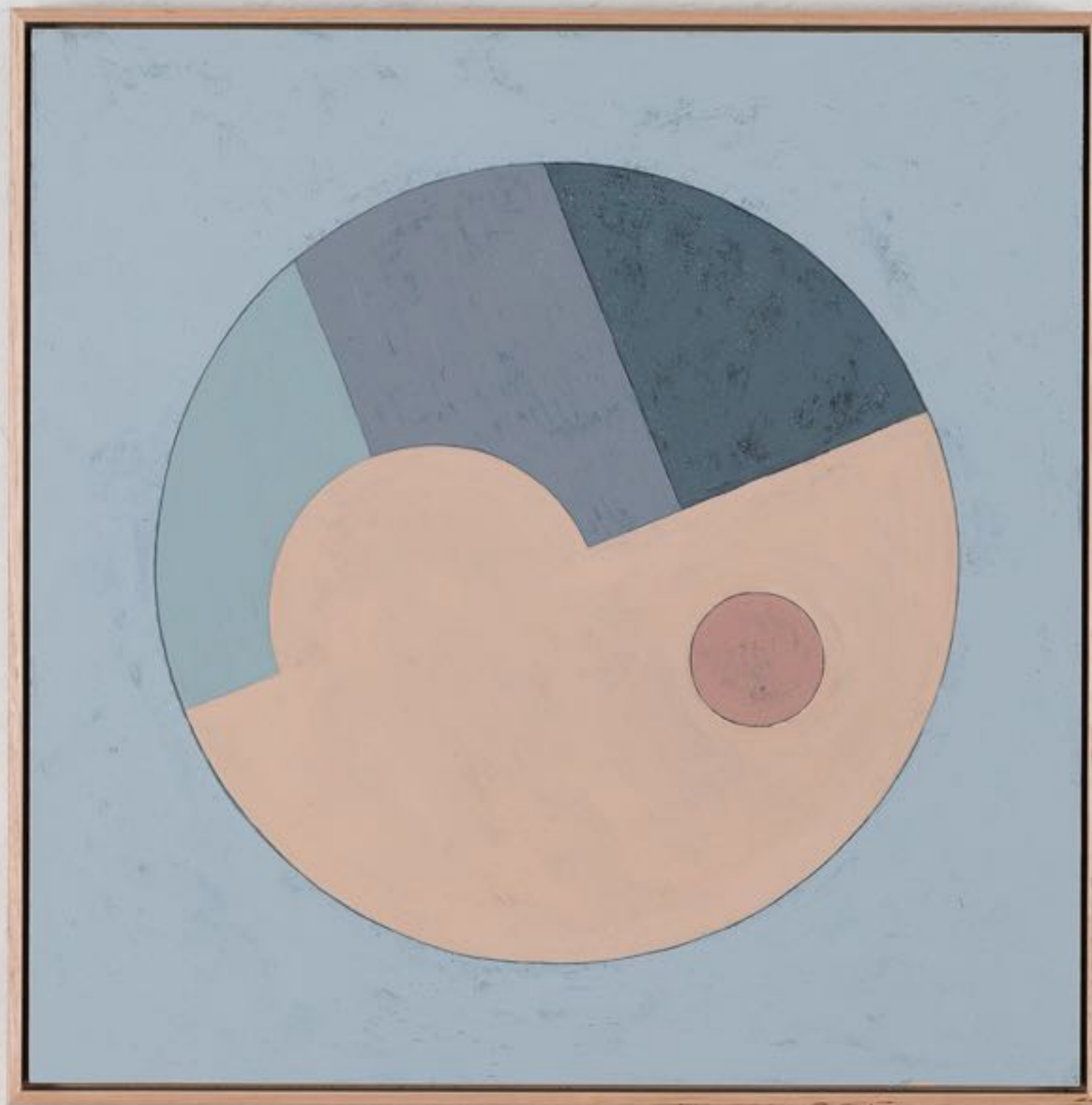


Two Halves Do Make A Whole / Duality
Acrylic and mixed media on board. Framed in Tasmanian Oak
Framed size 700x1000mm (artwork size 500x800mm)
\$950



**A Blessing in Disguise Is Still A Gift /
Fortune**

Acrylic and mixed media on board.
Framed in Tasmanian Oak
Framed size 520x520mm
(artwork size 500x500mm)
\$750



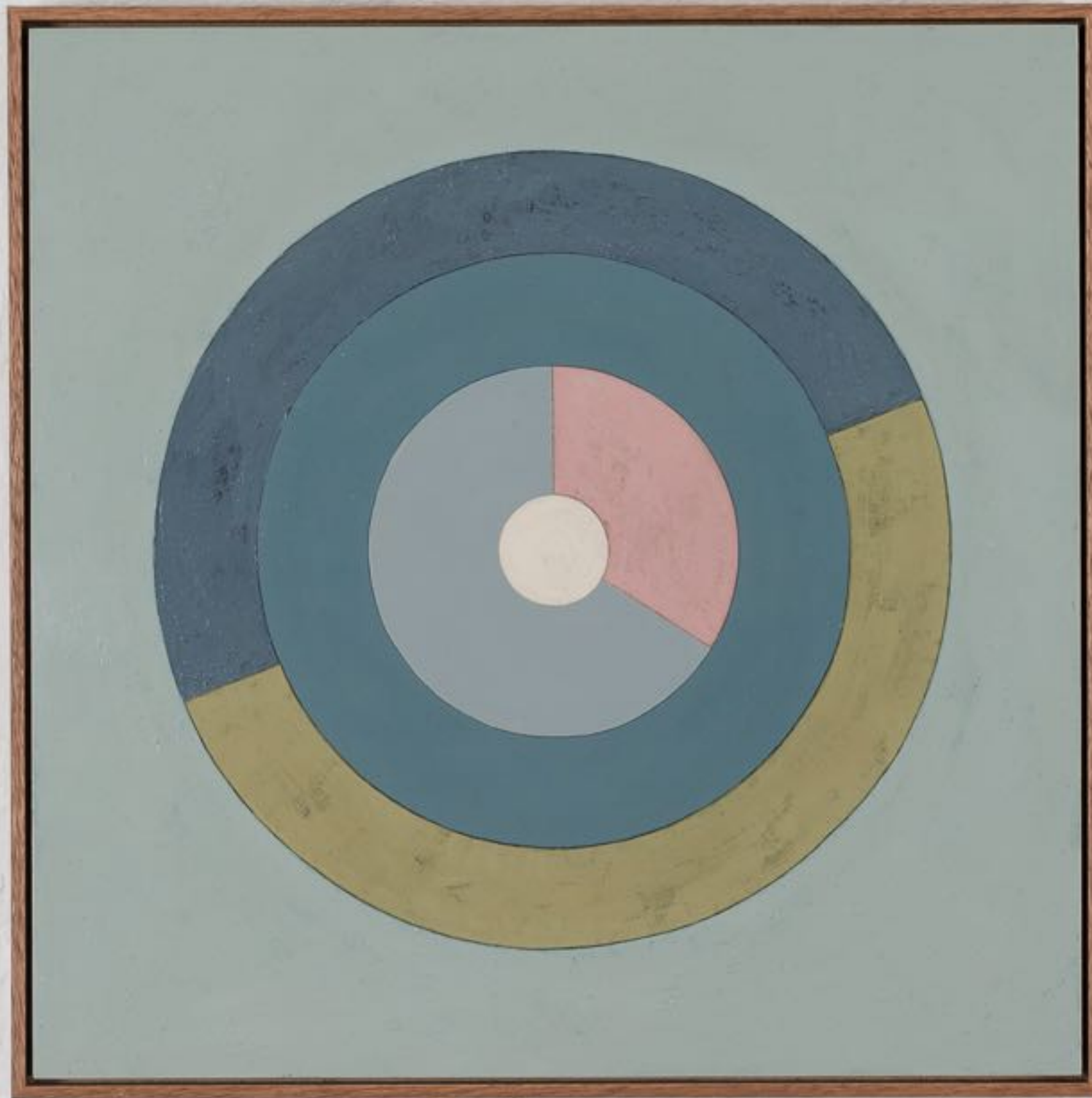
Shifting Sands Within / Change
Acrylic and mixed media on board.
Framed in Tasmanian Oak
Framed size 520x520mm
(artwork size 500x500mm)
\$750



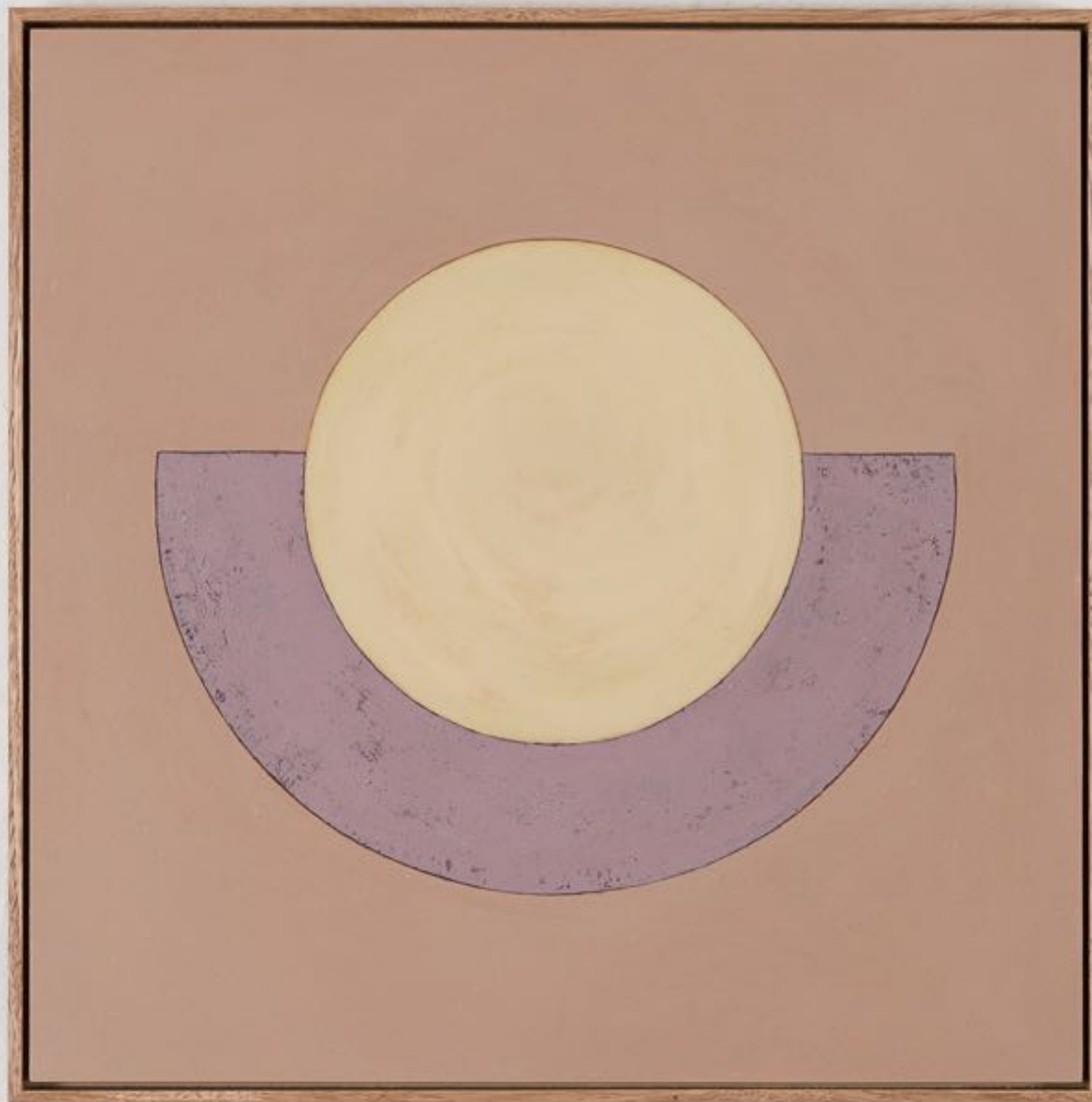
Time Unfolding / Evolution
Acrylic and mixed media on board.
Framed in Tasmanian Oak
Framed size 520x520mm
(artwork size 500x500mm)
\$750



**Sessility As A Saving Grace /
Blue Mussel**
Acrylic and mixed media on board.
Framed in Tasmanian Oak
Framed size 520x520mm
(artwork size 500x500mm)
\$750

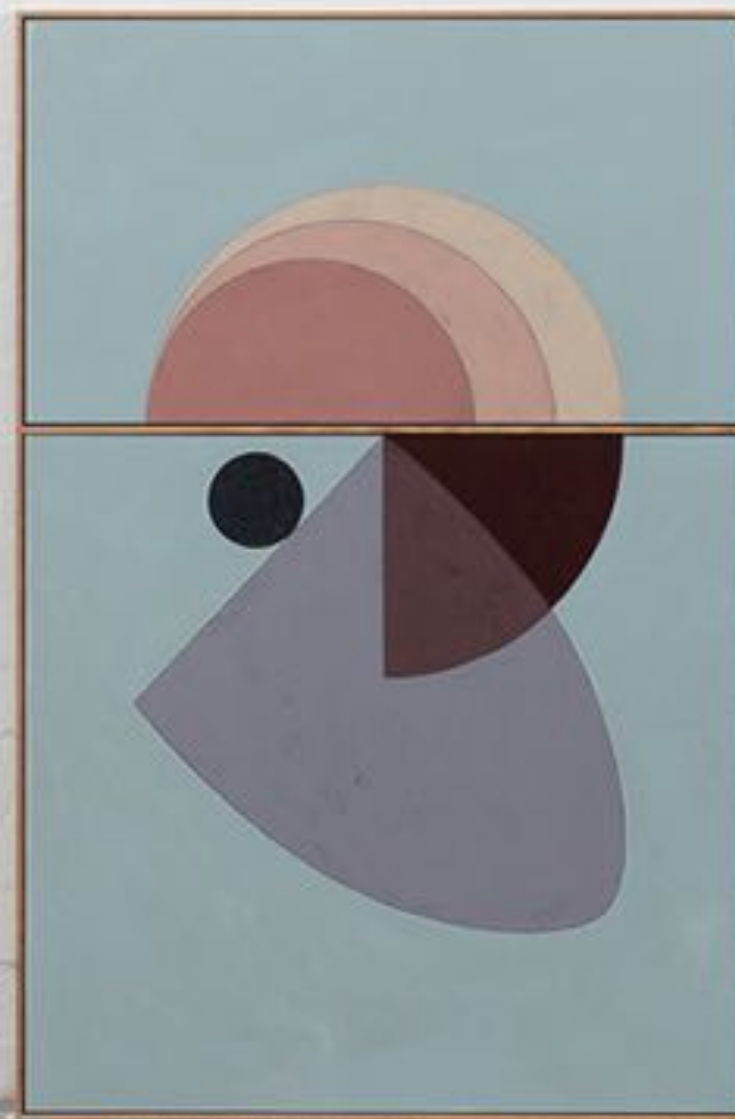


**Layer Upon Layer /
Self Preservation**
Acrylic and mixed media on board.
Framed in Tasmanian Oak
Framed size 520x520mm
(artwork size 500x500mm)
\$750

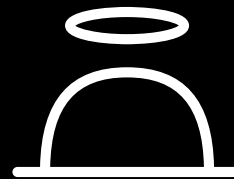


**Giant Golden Pearl In A Cradle /
Wisdom**

Acrylic and mixed media on board.
Framed in Tasmanian Oak
Framed size 520x520mm
(artwork size 500x500mm)
\$750



Artwork photography by Ari Hatzis
Studio photography by Natalie Jeffcott



SAINT CLOCHE

37 MACDONALD STREET PADDINGTON NSW

SAINTCLOCHE.COM